

Luncheon Event with Tanya Acker

By Peggy Spear

About forty-five members and their guests gathered in Mary Lois Nevins' green and serene garden for a sumptuous buffet in mid-June and a lively exploration of International Relations as an American Value. It is a topic of great personal interest to Tanya Acker, who spent a year at Oxford University as one of ESU's Luard Scholars.

She offered a historical perspective going back to Thomas Jefferson, who received the British Ambassador in his carpet slippers to make the point that democratic values were foremost in the young Federal Republic. And she provided examples of American administrations that had resolved international conflicts peacefully through negotiation.

Tanya's cogent arguments and eloquence stimulated a variety of questions from the audience, and she responded to each one with characteristic candor. It was clear that she had engaged members at a real level, and made her point effectively. Keep an eye out for this dynamic young woman, a frequent television commentator and loyal ESU alumna. 



Ms. Tanya Acker



Guests of ESULA enjoyed a delicious luncheon in Board Member Mary Lois Nevins beautiful garden.

Inside this issue:

<i>Luncheon Event with Tanya Acker</i>	1
<i>President's Message</i>	2
<i>Meet our new and renewing Board Members</i>	3
<i>2010 Shakespeare Competition</i>	4
<i>The New ESU-US Mission Statement</i>	5
<i>Thank you to our Angels</i>	5
<i>More British Humor</i>	5
<i>ESU Bangladesh Launches</i>	6
<i>Join the ESU</i>	7
<i>Goings on Around Town</i>	8
<i>Save the Date</i>	8
<i>The Newsletter Looks Great in Color</i>	8

The English-Speaking Union—Los Angeles Branch

The Los Angeles Branch Newsletter is published two times a year. The English-Speaking Union, established by Royal Charter, is a non-profit corporation dedicated to:

Creating friendship and global understanding through English

Membership Information

Individual, family and corporate membership is available. For membership information

Visit our website at:

www.esula.org

Or write to:

ESULA
P.O. Box 40313
Pasadena, CA 91114

Or email us at:

LABranch@esuus.org

ESU-LA Board of Directors

Christopher Wright

Chairman & Shakespeare Co-Chair

Peggy C. Spear *President*

Jean Bruce Poole *President*

Emeritus & Shakespeare Co-Chair

Ramiro Perez *Treasurer*

Judy Ahl *Membership Chair*

Ginger Menke
Recording Secretary

Denise Nighman

Susanna Adkins
Event Co-Chairs

Barbara Barbarics

Louis Fantasia
Educational Programs

Barbara Martin
Development Consultant

Priscilla Moorman
Corresponding Secretary

Don Cook
Strategic Planning Chair

Richard Gower
Mary-Lois Nevins

Rebecca Rasmussen
Tufenkian

Branch Manager

President's Message

-Peggy Spear

Dear ESULA Friends,

I am delighted to report that Pat Schroeder, our national chairman, has accepted an invitation to visit our branch, and we look forward to welcoming her at a luncheon on September 20, time and location to be announced. With the installation of Pat as our National Chair, ESU has embarked on a review of our mission statement. This is a time of reassessment and planning for the future both nationally and within our branch, and we encourage you to contact Board members and the national office to share your thoughts and ideas.

At the invitation of the Weingart Foundation, which awarded a grant to the Shakespeare Teacher Workshop Series, several Board members recently participated in an online organizational assessment. Louis Fantasia reviewed the results with the Board at our May meeting. The results held no surprises. What we do, we do well, but the lack of a strategic plan presents a serious challenge. We are fortunate to have several new Board members with special qualifications to help us make the most of this time of reassessment and planning. (You will meet them in this issue.) Don Cook, whom some of you will remember as a former ESU/LA Board member, has agreed to facilitate a Board retreat this summer to develop a strategic plan.

When I took office last fall, we were concerned about funding for the Shakespeare competition this spring. Enter Barbara Martin, our Development Coordinator, who suggested we invite a small group of special friends to join the Angels with a generous gift in support of the competition. Our warm thanks to Ethel Farrand, Rosemary Lonergan, Priscilla Moorman, Mary Lois Nevins, Maggie Jagels, and Enid Reeves for their generous support. Together with other patrons who responded to our patron letter, they made the competition a reality this year. In addition, we received a grant of \$10,000 from the Ralph M. Parsons Foundation, so we are in a strong position to continue our efforts to bring Shakespeare to life in Southern California. We were honored to have Bob Tuttle, former U.S. Ambassador to Great Britain, as Honorary Chair of the competition, and hope to welcome him to other events in the future. I'm happy to report that Joe Farragher, the winner of our branch competition, placed as a semi-finalist in New York.

I look forward to seeing you at our fall meeting with Pat Schroeder. She is well qualified to lead us into the 21st century.

Cordially,

Peggy C. Spear

Peggy C. Spear
President



Meet Our New and Renewing Board Members

Richard Gower

Richard S. Gower was born in Chicago, Illinois and attended Northern Illinois University receiving a BS in marketing. He attended Loyola of Los Angeles Law School and graduated with a JD. He attended Loyola in the evening while teaching 6th grade during the day. After graduating from law school he was hired by the Los Angeles County District Attorney's Office as a Deputy District Attorney. He served in that position for 5 years before leaving to work with the law firm of Flint and Mackay where he became a partner. After Flint & Mackay dissolved he and other former partners started the law firm of Inglis, Ledbetter & Gower in 1982. Richard specializes in trial work such a business litigation and insurance defense.



Mr. Gower is married and has two grown children, Michael Gower, who is an attorney and Jonathan Gower who is studying for the California Bar Examination. Mr. Gower lives in Venice, California in a loft with his wife Lydia who is the Director of Special Events for the Keck School of Medicine at USC and their dog Molly.

Mr. Gower was President of the ESU between 1987 and 1989. During that time he started the Los Angeles Branch Shakespeare Competition. He then became Chairman of the ESU. In the early 1990's Mr. Gower was Chairman of the British Consul General's Advisory Board. He was also a member of the British American Chamber of Commerce. During his limited free time he enjoys sports, travel, and all things automotive.

Ramiro Perez



We are pleased to welcome Ramiro Perez as our new Treasurer. He and his bride, Judy Ahl, met in the MBA program at Pepperdine University, and moved to Pasadena as new homeowners last year.

Barbara Martin learned of his desire to get involved with the community, and his solid background in financial management. She used her considerable powers of persuasion to recruit him to serve on the ESULA Board of Directors. His warmth, enthusiasm, and energy are a welcome addition to any group, and we look forward to working with

him to involve more young people in our programs.

Don Cook

Mr. Cook was born on the prairie in North Dakota where he went to a one-room country school for 2 1/2 years. He moved to Minnesota during WWII and spent his college years at the University of Minnesota studying Health Care Administration. After completion of his MHA, he spent seven years on active duty with the US Air Force, including five years at a NATO Headquarters in Germany. Later, he completed a four year Kellogg Fellowship at the University of Minnesota, then taught two years in the graduate school at George Washington University, worked almost nine years as a partner with Booy, Allen & Hamilton and ran a major hospital in Miami. He was recruited to run Children's Hospital in Los Angeles, and later left to start his own consulting firm which he has been doing for the past twenty five years. He is married with three grown children and his favorite hobby is photography.



Hamilton High School Student Wins Los Angeles Branch Shakespeare Competition 2010

By Barbara Barbarics

Joe Faragher, winner of the LA ESU Branch Shakespeare Competition, is a 2010 graduate of Hamilton High School in Los Angeles. According to Joe and his English teacher, Pam Felcher, despite Joe's work with public speaking and acting, he benefitted most from techniques he learned in her class. The importance of classroom work carried Joe through the cold reading element of the competition. Given a piece from a Shakespeare play, one he had not prepared for the competition, Joe used the techniques of textual close reading; he examined Shakespeare's language in the soliloquy, word




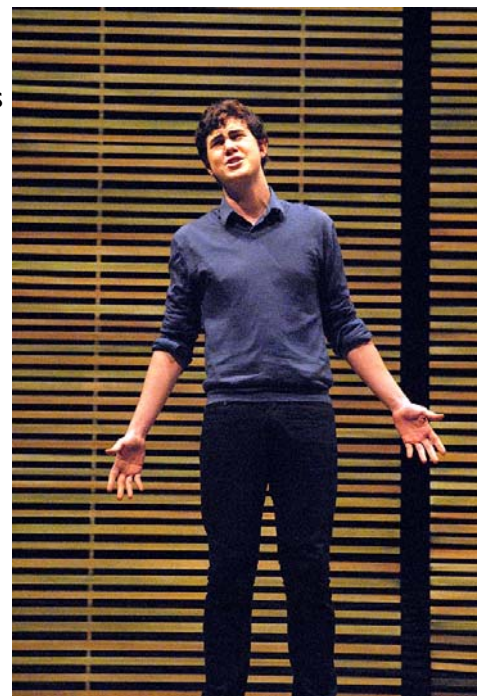
LA Branch Winner Joe Faragher receives coaching from Finals Judges Armin Shimerman and David Melville Before heading to New York for the National Competition.



Ambassador Robert Tuttle served as Honorary chair of the event and awarded prizes to the six LA Branch finalists.

by word. The same skill set served Joe well in the finals in New York in April. Joe's success affirms that the Shakespeare Competition is not only for dramaturges but also for students of English literature. Of course, practice is another important element, he added quickly. As Joe and his teacher agree, this competition is invaluable because students can become inured to their teachers' comments, especially when they continue to do well.

Competition gives them a larger stage and valuable feedback from judges involved with the theater and academia. Joe's love of language has also taken him to Paris this summer, where he is taking an immersion class in French. 



Joe Faragher performing in New York at the National Level of the Shakespeare Competition.

The new ESU US Mission Statement as approved by the National Board of Directors at its meeting on Friday, June 11, 2010

Tagline:


Education. Scholarship. Understanding.

Mission Statement:

The ESU celebrates English as a shared language to foster global understanding and good will by providing educational and cultural opportunities for students, educators, and members.


Vision Statement:

The ESU, a non-profit, non-political organization:

- Advances global understanding by providing educational opportunities through programs and scholarship for students, educators, and members;
- Promotes communication and open exchange of ideas among the world's speakers of English;
- Enriches communities through active involvement of its branch members in outreach programs;
- Offers financial assistance to students and educators to further academic pursuits in English-related studies, and
- Develops common bonds through a shared interest in the English language and culture to strengthen friendship among members and those they serve. 

A Special Thank You to Our Angels

By Barbara Martin

This winter, as we faced problematic funding for the most significant project of our year—the Annual Shakespeare Competition—we dreamed that a band of angels might come to our aid. And they did! Six Angels—Mary-Lois Nevins, Rosemary Lonergan, Priscilla Moorman, Ethel Farrand, Enid Reeves and Maggie Jagels—responded with generous gifts totaling \$12,500 which helped secure the 2010 outstanding competition. How can we ever thank them enough? These gifts, added to a wonderful grant of \$10,000 from the Parsons Foundation, are the guarantors of our most important educational outreach. 

Don't We Just Love the Brits!!!


Sometimes it DOES take a Rocket Scientist!!

Scientists at NASA built a gun specifically to launch standard 4 pound dead chickens at the windshields of airliners, military jets and the space shuttle, all traveling at maximum velocity. The idea is to simulate the frequent incidents of collisions with airborne fowl to test the strength of the windshields.

British engineers heard about the gun and were eager to test it on the windshields of their new high speed trains. Arrangements were made, and a gun was sent to the British engineers.

When the gun was fired, the engineers stood shocked as the chicken hurled out of the barrel, crashed into the shatterproof shield, smashed it to smithereens, blasted through the control console, snapped the engineer's back-rest in two, and embedded itself in the back wall of the cabin, like an arrow shot from a bow.

The horrified Brits sent NASA the disastrous results of the experiment, along with the designs of the windshield and begged the US scientists for suggestions.

NASA responded with a one-line memo -"Defrost the chicken." (True Story) 



ESU BANGLADESH LAUNCHES: THE ESU FAMILY REACHES 51

by Annette Fisher *Head of International Programmes*

In late January Mike Lake, Director-General, Martin Mulloy, Director of Education and I left our Mayfair offices, leaving behind cold, grey London for the beautiful, sunny lands of Bangladesh. Our mission; to launch ESU Bangladesh, build and promote partnerships and start its public speaking competition.

Background to ESU Bangladesh

Professor Alan Lee Williams, a former Director-General of the ESU and now Chairman of the Sir William Beveridge Foundation, introduced Asif Chowdhury and Jiban Das from the Foundation in Bangladesh to Valerie Mitchell, the ESU's former Director-General. Asif and Jiban undertook the job of developing an ESU in their home country. Asif is now the Chairman of ESU Bangladesh and Jiban, the Secretary-General.

The Launch

We landed in Dhaka on the afternoon of the launch day, to be greeted by Rashed Suhrawardy of the Sir William Beveridge Foundation and newly recruited-member of ESU Bangladesh who whisked us to the hotel and then straight on to the launch ceremony at the High Commissioner's residence. In true ESU style, the launch ceremony was a lovely occasion with lots of networking and many contacts made. The guests included Charles Nuttall, Director of the British Council, teachers, university lecturers, many of ESU Bangladesh's corporate partners and of course, the ESU Bangladesh committee. The Dhaka media were also present and Mike recorded an interview with Bangladesh TV network, ATN presenting the background to the launch of an ESU branch and its ambitions. We were also delighted that alumna 'number one' of ESU Bangladesh from the 2009 Stratford Study Course was able to attend; we hope that she'll be the first of many alumni. And so the Memorandum of Understanding was signed and the ESU flag was presented. Thus, the ESU of Bangladesh was born.

Meetings and Partnerships

The week's programme was very successful and we left Dhaka with a real feeling of achievement. Here are some highlights:

Connecting Classrooms:

We met with Charles Nuttall and Dominic Register to discuss a partnership between ESU Bangladesh and the British Council through their 'Connecting Classrooms' programme. This initiative builds lasting partnerships between schools in the UK and around the world.

(www.britishcouncil.org/learningconnecting-classrooms) The plan is that ESU Bangladesh will expand its public speaking competition to all 90 of the British Council schools in the Dhaka region through the established network for the 2011 competition. As a result of this undertaking, the ESU is now exploring a wider, overall relationship through the 'Connecting Classrooms' programme. Grameen Bank: We met with Nurjahan Begum, Managing Director of Grameen Shikha and Nobel Peace Prize winner. For those who have not come across Grameen before: 'Grameen Bank provides credit to the poorest of the poor [only women] in rural Bangladesh, without any collateral'. (www.grameen.com) Grameen Shikha 'provides financial support to poor meritorious students in the form of scholarships'. (www.grameen-info.org/grameengshikha) We discussed possibilities for branches and members to become involved with the education scholarships provided by Grameen. We were also privileged to visit a Borrowers Centre in a Grameen village outside Dhaka and had the opportunity to talk with the borrowers there about how the Grameen loans had changed their lives and the lives of their children. The Grameen Bank has had unbelievable results in terms of development, empowerment and social justice. The model has become so successful that it has been replicated across the world and the founder, Professor Muhammad Yunus and his bank were awarded the 2006 Nobel Peace Prize.



Join the English-Speaking Union!

Membership is valid July 1 through June 30 each year.

NAME(S): _____

ADDRESS: _____

HOME PHONE: _____ MOBILE PHONE: _____

OFFICE PHONE: _____ FAX: _____

E-MAIL: _____

Individual: \$65.00 Couple: \$95.00 Branch Patron: \$200.00*

**Branch Patrons may attend all regular programs at no additional charge. Some special events may not be included.*

I enclose my check made payable to **The English Speaking Union** or

I prefer to pay by credit card: Visa MasterCard AMEX

Card Number: _____ Exp. Date: _____

Name as it appears on the card: _____

Signature: _____


Please mail your complete application to: ESU-LA, P.O. Box 40313, Pasadena, CA 91114

Your membership dues may be tax deductible. Please consult with your tax advisor.

Public Speaking:

The launch in Bangladesh saw the start of an initiative which we hope will become a successful part of the International Public Speaking Competition training programme. Jagdish Singh and Roopi Lakhiani, two public speaking mentors who work with ESU Malaysia on their competition, joined Martin and me to give a workshop to teachers and students and to assist ESU Bangladesh in starting up and organising its competition, ready for the IPSC final in May. The workshop took place with the four schools that will compete in the national competition. The passion and humour of Jagdish and Roopi didn't fail to excite and encourage even the shyest of the students. Supported by their teachers, they will go on to participate with skill and confidence. The winner will travel to London in May to join 80 other students from Malaysia and 45 other countries to compete at the international final. ESU Malaysia has pledged to support the competition in Bangladesh for the next two years and we hope to replicate and expand this initiative to our other emerging ESUs.

What did we learn in Bangladesh?

- Giving people the means to help themselves out of poverty is worth more than you could ever give in handouts. People who can help themselves are confident and empowered and strive to provide the best for their children
- People in Bangladesh are incredibly friendly and generous
- Never drive, travel in a CNG (tuk-tuk) or take a rickshaw in Dhaka – always walk or you will end up sitting at red lights for up to 15min at a time
- Always wear strong anti-mosquito spray
- Be happy to let people take photos of you, they'll do it anyway
- Never take directions from Martin
- Eat as much food as possible in Dhaka – it's delicious, especially the Biryani
- The students in Dhaka are soon going to be very good at public speaking, watch out IPSC 



**Los Angeles
Branch**

P.O. Box 40313
Pasadena, CA 91114
RETURN SERVICE REQUESTED

Phone: 213-393-5407
E-mail: LABranch@esuus.org

Education. Scholarship. Understanding

We're on the web!
www.esula.org

NONPROFIT ORG
US POSTAGE
PAID
PASADENA, CA
PERMIT #428

Save the date

For information or to make a reservation please call:
213-393-5407 or email: LABranch@esuus.org.

September 20, 2010

**Luncheon with our National Chair Pat
Schroeder**

Time and location TBD.

October 2010—Garden Party

Time and location TBD.

December 2010—Christmas Party

Time and location TBD.

February 2011

Shakespeare Competition Semi-Finals

Time and location TBD.

March 6, 2011

Shakespeare Competition Finals

Time and location TBD.

March 27, 2011

Evelyn Wrench Speaker

Home of Richard Gower, Venice, CA. Time TBD.

Goings on Around Town

Board Member, **Susan Adkins** will appear in *A Concert from the Celtic Land of Wales* with the Welsh Choir of Southern California: Sunday, October 24, 2010 at 3pm at St. Francis Episcopal, 220 Via Rosa, Palos Verdes Estates, CA 90274. For more information please go to:
www.welshchoir.com.

If you have an event that you would like listed in this section, please send an email with all the pertinent details to: LABranch@esuus.org. ☉

The Newsletter Looks Great in Color

You can see the newsletter in color by going to esula.org/forms.htm and opening a file of the current, as well as past, newsletters. Of course rather than receiving the black and white printed version, you can ask our Branch Manager to send you the color Newsletter via email. That way you get the color version and save the ESULA printing and mailing costs. If you no longer want to receive the black and white printed version (and only want the email version) contact Rebecca Rasmussen Tufenkian our Branch Manager at: LABranch@esuus.org. ☉

